

2024 ANNUAL REPORT

週年年報



目錄

TABLE OF CONTENTS

序言 PREFACE	3	義工服務及企業社會責任 VOLUNTEERING AND CORPORATE SOCIAL RESPONSIBILITY	28
董事會及團隊 BOARD OF DIRECTORS AND TEAM	4	籌款活動 FUNDRAISING ACTIVITIES	30
願景及使命 VISIONS AND MISSIONS	5	財務報告 FINANCIAL REPORT	31
創辦人的話 MESSAGES FROM OUR FOUNDER	8	活動概覽 EVENTS SUMMARY	32
專題故事 FEATURED STORIES	10	同行夥伴 DONORS AND PARTNERS	33
我們的受惠者 OUR BENEFICIARIES	11		
我們的工作 OUR WORK	12		
我們的中心 OUR CENTRES	14		
食物及物資援助項目 FOOD AND MATERIAL SUPPORT	16		
經濟支援項目 FINANCIAL SUPPORT	18		
教育項目 EDUCATION PROGRAMS	20		
強化生命項目 EMPOWERMENT PROGRAM	23		
社區發展項目 COMMUNITY PROGRAMS	26		



序言 PREFACE



從創辦人傅雅妮小姐開放自己的家給街童開始，啓愛便被創立了。在2012年我們開設了第一個青年中心，隨後在2013年開設了啓愛家庭服務中心，並且陸續分別開設啓愛共融基金永義慈善音樂及食物資源中心「MEAL惜BOX」（2017年）、社會企業「啓愛點」（2019年）及過渡性房屋營運中心「築福里」（2020年）。在過去的十年裏，啓愛共融基金有限公司一直堅守舒緩香港跨代貧窮的本心，擴展服務及陸續推出不同的扶貧項目。在疫情期間我們堅守前線工作，與基層甚至整個香港社區共度時艱。無論社會局勢如何，我們會努力將服務正常化至疫情前的水平，以及為基層爭取更多福利，我們幫助及教育基層家庭的心亦會一如既往地堅定及明確。

The journey of J Life was begun by our founder, Ms Elli Fu who welcomed her home to the street children. J Life was established and opened our first Youth Centre in 2012, followed by J Life Family Service Centre in 2013. Then in the following years, J Life launched more service points for our programs, including Meal-sic Box (2017), social enterprise, J Life Mart (2019), and transitional housing operation center, Blessing Lane (2020). Over the past decade, J Life has been expanding our services and launching various poverty alleviation programs, in line with the mission to alleviate inter-generational poverty in Hong Kong. During the pandemic, we have been invariably on the frontline, working with the grassroots and even the entire Hong Kong community. Working hard to resume our services to the pre-epidemic level as the community gradually recovers is our current focus regardless of the social situation, and our commitment to helping and educating grassroots families remains as strong and clear as ever.

董事會及團隊

BOARD OF DIRECTORS AND TEAM

董事會 BOARD OF DIRECTORS

陳帆醫生 Dr. CHAN Fan
陳志樑先生 Mr. CHAN Chi Leung Tony

符詩林先生 Mr. FOO Tze Lin Kenny

團隊 TEAM

傅雅妮 FU Nga Nei Elli
(創辦人及行政總裁 Founder & CEO)

梁夏萍 LEUNG Ha Ping Winnie
(營運主任 Operations Officer)

溫偉明 WAN Wai Ming Adam
(助理項目主任 Assistant Project Officer)

鄧順芳 TANG Shun Fong, Ida
(助理項目主任 Assistant Project Officer)

江式淮 KWONG Sik Waaih, Amber
(項目助理 Programme Assistant)

郭家曦 KWOK Ka Hei, Katy
(項目助理 Programme Assistant)

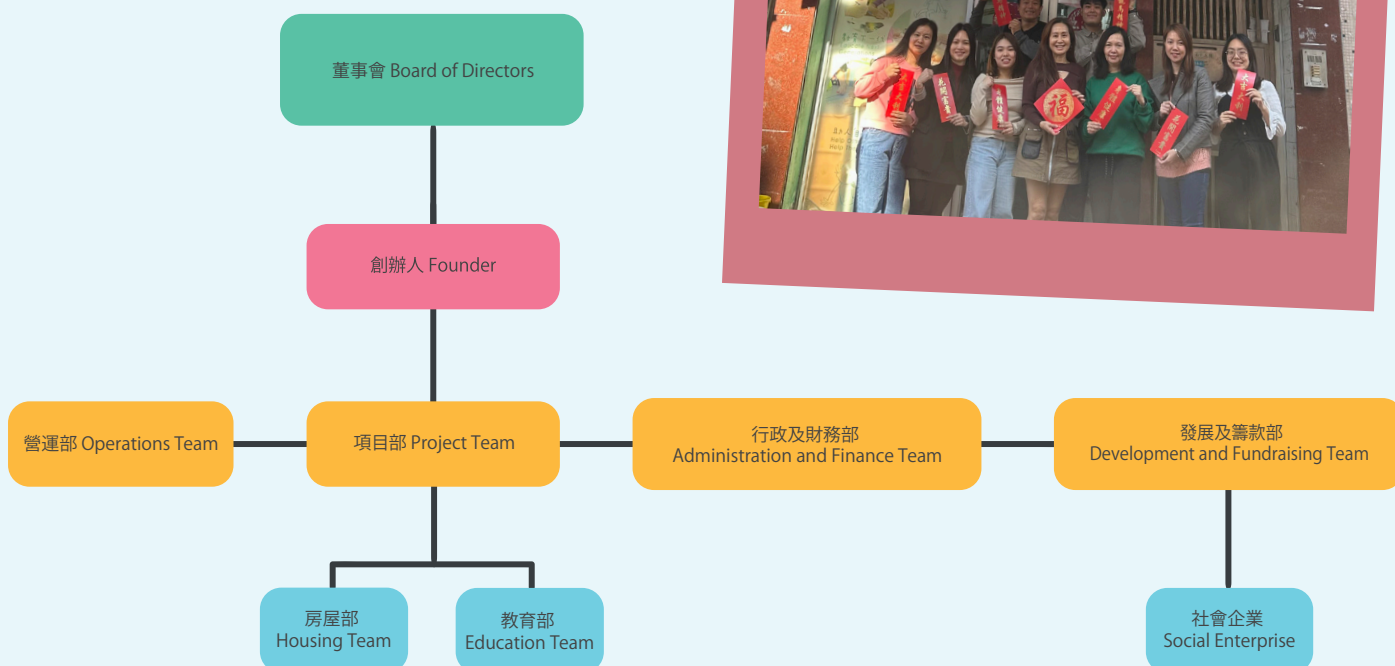
梁庭樟 LEUNG Ting Cheung, Joshua
(項目助理 Programme Assistant)

張怡 CHEUNG Yi, Joey
(項目助理 Programme Assistant)

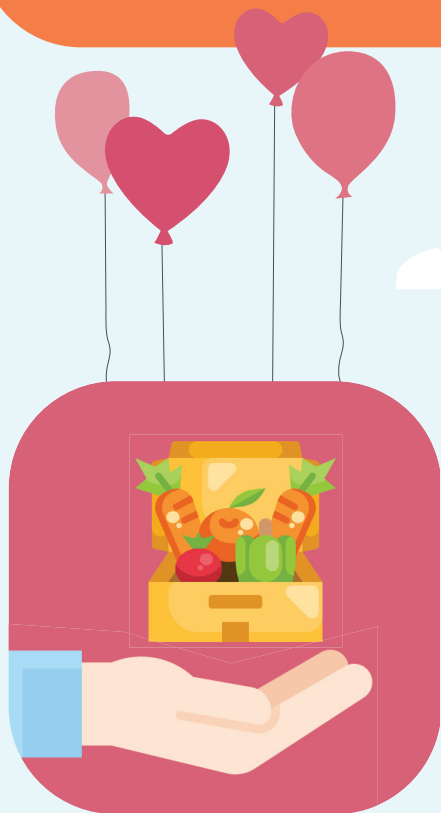
謝菁慧 TSE Ching Wai Wendy
(會計 Accountant)

黃素貞 HUANG Suzhen
(營運助理 Operations Assistant)

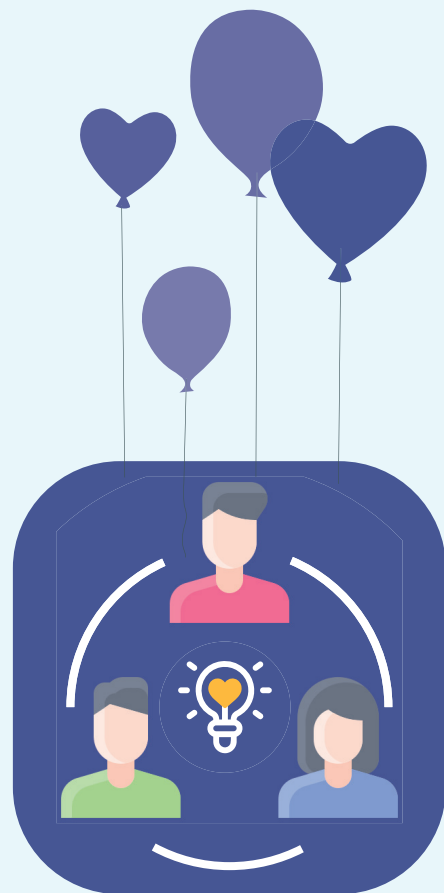
陳桂芬 CHEN Guifen
(營運助理 Operations Assistant)



願景和使命 VISION & MISSION



食物支援教育下一代
To feed the poor and
educate the next generation



舒緩香港跨代貧窮問題
To mitigate cross-generational
poverty in Hong Kong



助人自助
To help others to help
themselves

創辦人的話

MESSAGE FROM THE FOUNDER



親愛的啓愛同行者:

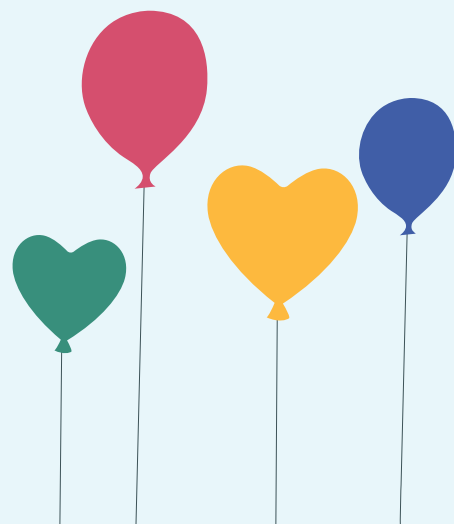
啓愛共融中心踏入第十二年的旅程，今年是全面恢復的一年半，看似好像很穩定，但是經濟真的每況愈下，很多店鋪及餐廳都結業，當然在回收剩餘食物都不是很理想；在教育方面，因疫情這幾年，學生用了太多電子產品，引致產生更多特殊問題出現，例如:注意力不足過動症、讀寫障礙及自閉症等等，這些問題都是加重了我們推行教育項目的進度，加上仍然面對人手短缺問題，雖然是困難重重，但感恩在過去的幾年，在強化生命項目上，訓練了幾個文職婦女，去協助執行一些基本的營運項目，減輕了不少團隊的工作量。

在這個艱難的時期，誠心感謝所有基金會、企業、捐贈者的持續捐贈，去幫助基層家庭能維持生計。

這年，我們亦加強在教育項目的多元化，以致能幫助更多特殊學習的兒童需求；而在強化生命項目上我們仍然繼續訓練婦女及青少年，不斷和不同的企業合作伙伴去尋求新的工作訓練項目，以致能實踐助人自助的核心思想；來年，啓愛將繼續向終止香港跨代貧窮的宏大願景前進，現正籌備擴展新的社企項目及啓愛住屋計劃，以培訓更多人才努力。

再次感激每一位曾經幫助深水埗基層家庭的朋友，您們的支持是根治香港貧窮問題不可或缺的一部份。讓我們繼續攜手合作，在衝破疫情、散播愛和希望，留下難忘的一頁！

創辦人及總裁
傅雅妮



Dear our fellow companions,

J Life has entered its twelfth year. This year is one and a half years after the full recovery. It seems to be very stable, but the economy is really getting worse. Many shops and restaurants have closed down. Of course, the recycling of surplus food is not very ideal. In terms of education, due to the epidemic in recent years, students have used too many electronic products, resulting in more special needs problems, such as attention deficit hyperactivity disorder, dyslexia and autism, etc. These problems have aggravated the progress of our implementation of educational projects, and we are still facing a shortage of manpower. Although it is difficult, I am grateful that in the past few years, I have trained several women in the empowerment project to assist in the implementation of some basic operational projects, which has reduced the workload of our operation teams.

Despite the difficult circumstances, I am also grateful to all foundations, corporations, and donors for their continued support to help grassroots families during this difficult time.

This year, we have also strengthened the diversification of our educational projects so that we can help more children with special learning needs. In the Strengthening Life Project, we continue to train women and young people and constantly seek new job training projects with different corporate partners so that we can practice the core idea of helping people to help themselves. In the coming year, J Life will continue to move forward with our grand vision of alleviating intergenerational poverty in Hong Kong, and we are now preparing for the expansion of our new social enterprise programs and J Life's housing project, which will contribute to the training of more talents for the grassroots.

Once again, I would like to thank everyone who has helped the grassroots families in Sham Shui Po. Your support is an indispensable part of the fight against poverty in Hong Kong. Let's continue to work together and leave an unforgettable page in overcoming the pandemic and spreading love and hope!

Founder and CEO
Elli Fu



啓愛董事的話

MESSAGE FROM OUR BROAD DIRECTOR

序言

我與啓愛的旅程始於2013年，當時以志願者身份加入，深受一個簡單卻根植心底的信念啟發——「助人自助」。這些年來，我們始終堅持這個核心精神，在滿足基層即時需求的同時，更重視建立長遠的關係，賦予個人力量，並為深水埗社區孕育希望。

深水埗對我們而言，是充滿溫度與使命的所在。多年來，我們與超過1,400戶草根家庭並肩同行——包括弱勢家庭、單親住戶、以及來自不同背景的街坊。我們的使命超於短期援助，更致力創造深遠而積極的影響，這些改變不僅惠及受助者，也悄然觸動著每一位支持者的生命。

紮根深水埗逾十年，我們與社區家庭建立了深厚的信任。這份長久的關係讓我們能更敏銳地察覺並回應他們的需求，例如：在課後輔導中，我們發現部分學童有特殊教育需要，於是開設小班教學以提供更貼心的指導，並舉辦音樂啟蒙工作坊，讓孩子透過藝術探索自我、表達情感。

婦女賦能亦是我們的重點項目。在捐助夥伴的支持下，學員習得專業手工藝技能，將作品轉化為收入來源——既改善經濟自主，亦重拾自信。

當然，我們也重視快樂學習與家庭共融！從電影欣賞、STEAM工作坊，到暑期語言營、主題樂園遊覽及親子歷奇活動，我們確保每一年都充滿歡笑、成長與珍貴回憶。

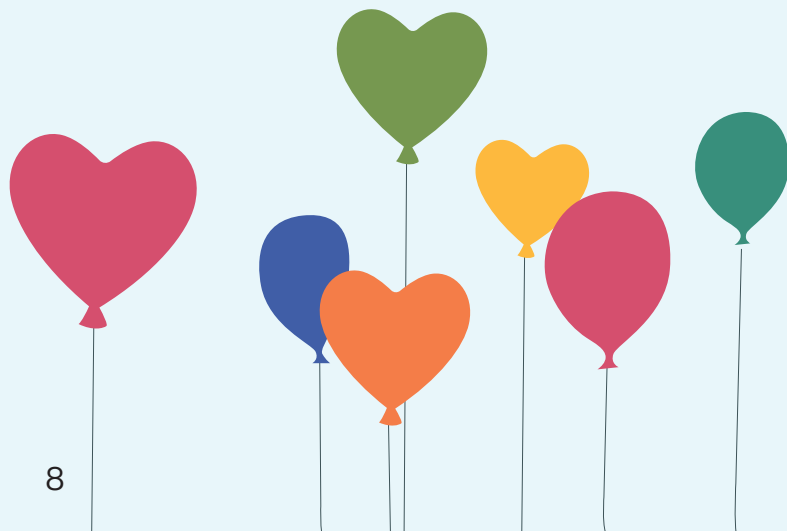
這一年如同往年，充滿獨特挑戰。但我們始終相信：只要懷抱善念、真誠付出、堅定信念，自會走出道路。這份信念的實踐，離不開我們全心投入的同工團隊——他們之所以傾注熱情，正是因為深信「付出能改變生命」的力量。

在此，我們要特別感謝所有企業捐助者、個人捐款者及義工。您的資金支持與時間奉獻，化作了改變生命的契機。但願這份報告能讓您看見，您參與的不只是援助，更是韌性、尊嚴，以及一個更緊密相連的社區。

當您閱讀這份報告時，願您能從文字背後，讀到一張一張真實的臉龐與故事——這正是您帶給世界的獨特光芒。

謹致謝忱，

陳志樑



Preface

My journey with the J Life Foundation began in 2013 as a volunteer, inspired by a simple, yet deep-rooted, belief: “Help others to help themselves.” This core value remains the heartbeat of our mission—building long-term relationships while meeting immediate needs, empowering individuals, and fostering hope in the Sham Shui Po community.

Sham Shui Po holds a special place in our hearts. Over the years, we have walked alongside more than 1,400 grassroots families—including underprivileged households, single-parent families, and individuals from all backgrounds—sharing in their struggles and celebrating their triumphs. Our mission goes beyond the mere provision of short-term aid; we strive to foster lasting, positive change, benefiting not only our beneficiaries but also everyone who supports this community. Your generosity ripples outward that touch lives in profound and immeasurable ways.

Rooted in Sham Shui Po for over a decade, we have built lasting trust with families in our community. These strong relationships allow us to identify and address their evolving needs. For example, noticing that some children in our after-school tutoring program had special educational needs, we introduced smaller class sizes for personalized attention and launched a music enrichment workshop to help them explore creativity and self-expression.

Empowering women is another key focus. With the support of our donor-partners, participants gain professional craftsmanship skills, turning their handcrafted products into a source of income—boosting both their financial independence and self-confidence.

And of course, we believe in joyful learning and bonding! From movie nights and STEAM workshops to summer language camps, theme park visits, and family adventure camps, we ensure every year is filled with fun, growth, and unforgettable memories.

As in years past, this year presented its own set of challenges. Yet, we are continually reminded that with unwavering faith, a good conscience, and sincere heart, we can overcome any obstacle. None of this would be possible without our dedicated staff, who pour their passion into service, motivated by a shared belief in the transformative power of giving back.

To our corporate donors, individualsupporters, and invaluable volunteers—thank you. Your financial contributions and the gift of your time have fueled our impact, and we hope that our collective efforts have touched your lives as deeply as they have ours. Together, we are not merely providing aid; we are nurturing resilience, dignity, and a stronger, more united community.

As you read this report, may these words bring to life the faces and stories they represent—and may they remind you that every act of kindness, however small, holds invaluable worth.

With gratitude,

Tony Chan
Director
J Life Foundation Limited

專題故事 FEATURE STORIES



嬋容是啓愛的會員，是一個6人家庭，當中更包括一個7個月大的新生嬰兒。兩年前，一家六口擠在只有110平方呎的劏房內生活，日子過得非常艱難。6個人擠在如此狹小的空間，讓嬋容感到極度沮喪和絕望。另外，孩子們也缺乏活動空間，身心健康也受到嚴重影響。

嬋容哀嘆道：「我們真的不知道該怎麼辦了。房租已經佔用了我們大部分的收入，實在是負擔不起一個環境更好的房子。看著孩子們擠在這樣的小房間裡，我真的覺得十分無助。」

幸運的是，嬋容參加了築福里過渡性房屋計劃。在計劃的幫助下，她們一家搬進了一個約400平方呎的單位，而租金更只是市價的一半。

嬋容欣喜地說：「搬進這裡之後，我們全家人的生活都煥然一新。孩子們有了更大的活動空間，我也不再感到那麼沮喪和無助了。我衷心感謝業主和祝福里計劃的幫助，讓我們獲得了這麼好的居住環境。」

兩年後，嬋容一家人更是成功申請到公屋，生活條件得以進一步改善。

Sim Yung, a member of J Life, was living with 5 family members, including an infant, crammed into a tiny 110-square-foot subdivided flat. The packed and confined living space left Sim Yung feeling depressed and hopeless, and hindered the healthy development of the children.

“We really didn’t know what to do. The rent was already taking up most of our income, but finding a bigger and better place was just beyond our financial means. Seeing the children squeezed into this small room, I just felt so helpless,” Sim Yung cried.

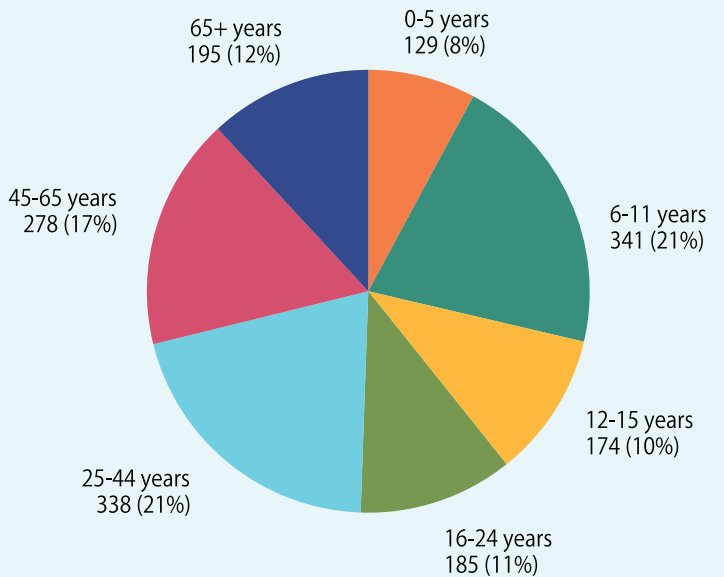
Fortunately, Sim Yung joined the Blessing Lane social housing program. With the help of the program, her family was arranged to move into a mid-sized 400-square-foot unit, with the rent only half of the market price.

“After moving in here, the lives of our whole family have been completely transformed. The children have enough space to play, and I no longer feel so depressed and helpless. I am deeply grateful to the landlord and the Blessing Lane program for helping us obtain such a good living environment,” Sim Yung said joyfully.

Two years later, Sim Yung’s family successfully applied for public housing, further improving their living conditions. Overwhelmed with gratitude for being able to have a comfortable home, Sim Yung expressed that this program has truly changed the lives of underprivileged families, enhancing their quality of life and sense of well-being.

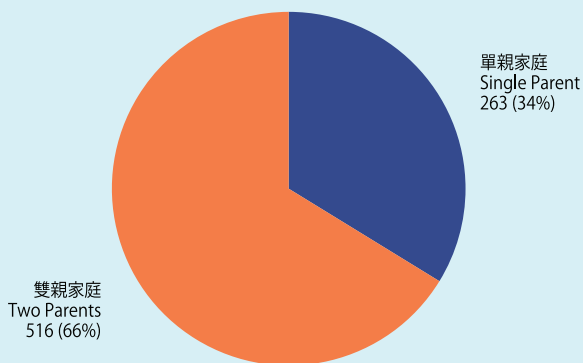
我們的受惠者 OUR BENEFICIARIES

年齡組別 AGE GROUP

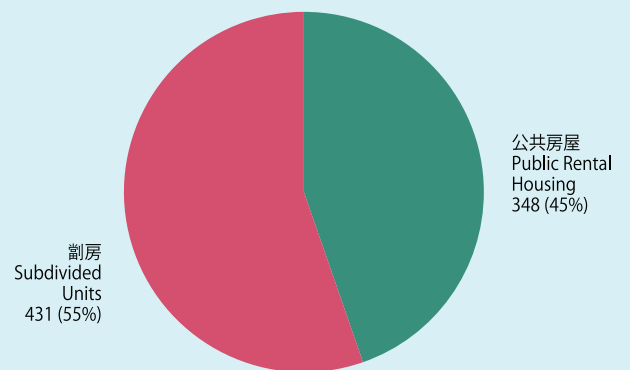


總會員人數: 1640

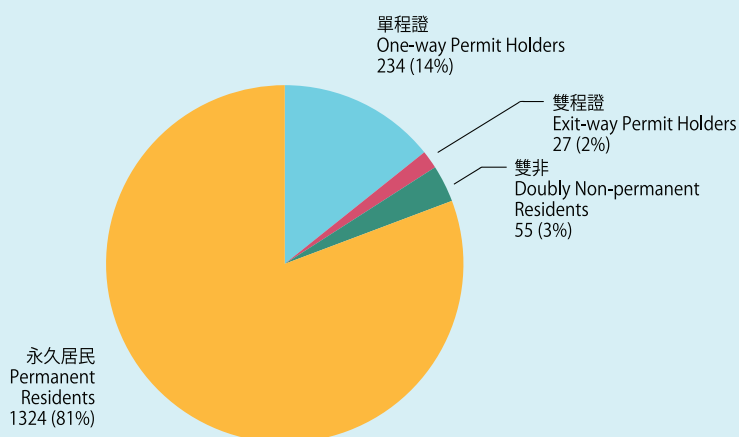
婚姻狀況 MARITAL STATUS



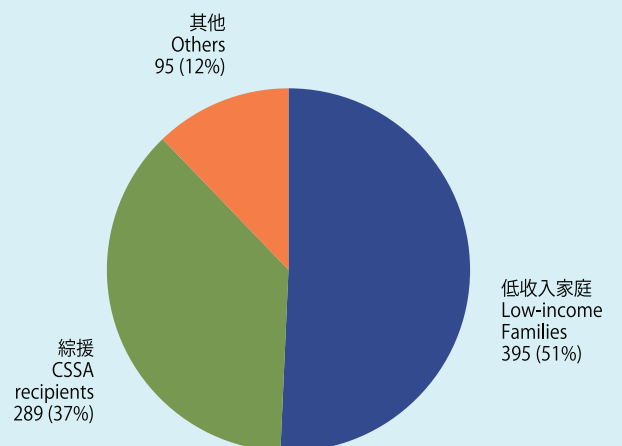
居住狀況 LIVING CONDITION



會員身份 RESIDENCY STATUS



經濟狀況 FINANCIAL STATUS



我們的工作 OUR WORK

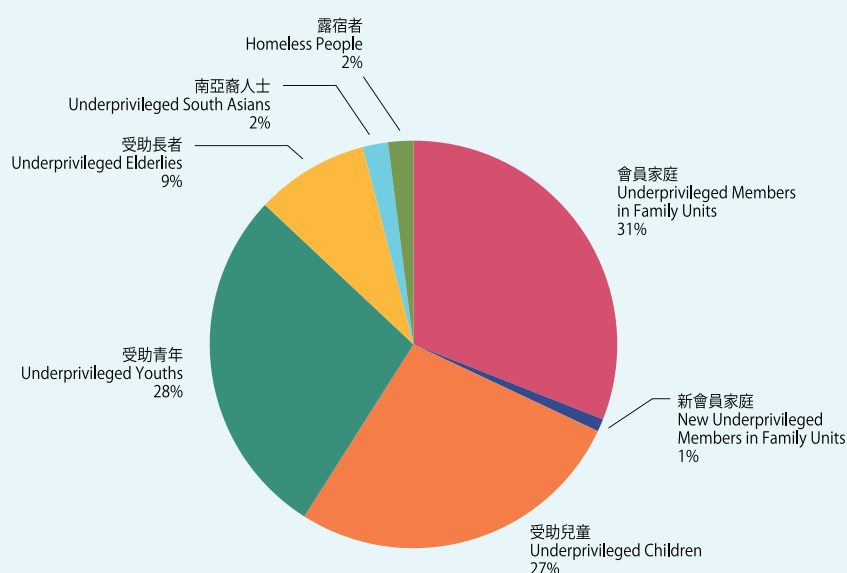


回收食物及物資
Food and resources rescued (kg)



食物及物資派發人次
Number of distributions made

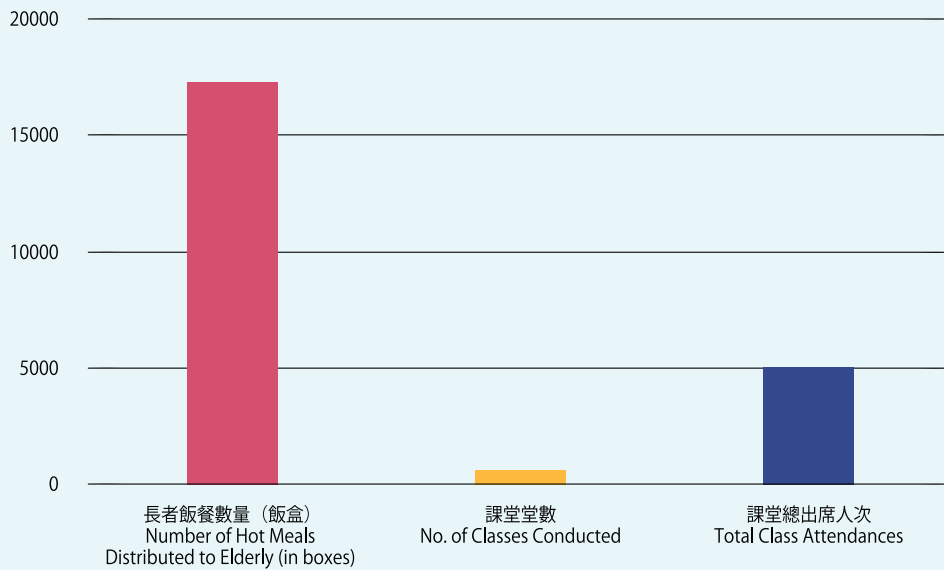
2012年迄今，我們幫助了
Since 2012, we have served



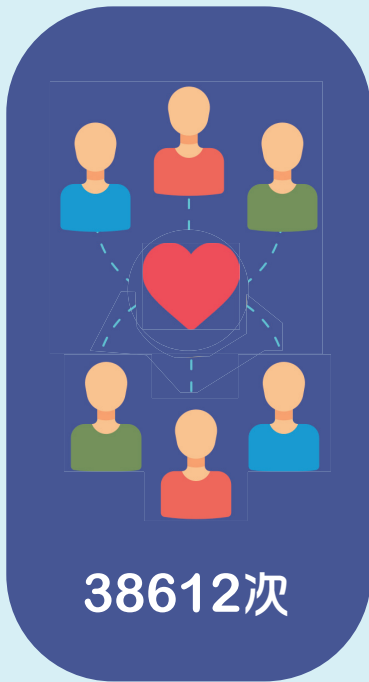
會員家庭 Underprivileged Members in Family Units	1439
新會員家庭 New Underprivileged Members in Family Units	37
受助兒童 Underprivileged Children	1234
受助青年 Underprivileged Youths	1279
受助長者 Underprivileged Elderlies	442
南亞裔人士 Underprivileged South Asians	100
露宿者 Homeless People	90

年度支援工作記錄 (1/1/2024 – 31/12/2024)
Social Statistics (1/1/2024 – 31/12/2024)

年度支援工作記錄 Social Statistics



長者飯餐數量 (飯盒) Number of Hot Meals Distributed to Elderly (in boxes)	17280
課堂堂數 No. of Classes Conducted	584
課堂總出席人次 Total Class Attendances	5007



年度總受惠人次
Number of Beneficiaries



年度啓愛會員義工總人數
J Life Member Volunteers



啓愛會員義工總服務次數
J Life Member Volunteer Attendances



個人及機構義工總服務次數
Individual and Corporate Volunteer Attendances



非啓愛會員義工時數
Number of Hours volunteered by non-J Life members

我們的中心 OUR WORK



十二年間，J LIFE 啓愛由一間中心發展到現在的**五間服務中心**：
In the past 12 years, our centres have grown from one to five:

- 2012 年** **J Café 青年中心 J Café, Youth Centre**
為青少年提供免費的學習場所，並定期舉辦不同課程。
Our youth center is dedicated to providing a free space for the youths, and regularly holds educational classes.
- 2013 年** **啓愛家庭服務中心 J Life Family Service Centre**
啓愛共融基金有限公司 – 辦公室及家庭服務中心
派發食品及物資的主要地點，部分教育項目(如功輔班)亦在此舉行
J Life Foundation, Family Service Centre, and Headquarters: Our main operation point for food and goods distribution and education programs, dedicated to helping families.
- 2019 年** **啓愛點 – 社會企業 J Life Mart, Social Enterprise**
我們的第一間社會企業，旨在增強弱勢社群的能力。啓愛點不僅售賣我們獲捐贈的物品，還售賣由我們的受惠者手工製作的物品。
Opened with a vision to empower the underprivileged. J Life Mart sells not only donated goods but also items that were handmade by our service users.



2021 年

築福里- 過渡性房屋營運中心
Blessing Lane, Transitional Housing Operation Centre

築福里是啓愛社會房屋項目當中的一個服務據點，我們在這裏為社會房屋住戶舉行各種社區活動。

Opened within our social housing project building to hold community activities for the residents.



2023 年

啓愛技能訓練所- 技能培訓中心 J Life Training Centre

我們的第一個單車在職培訓中心於2023年啟用，旨在培訓弱勢群體，尤以青年及婦女為主，讓他們能夠從事單車維修工作的場所。

Our first on-job training center for training the underprivileged community to work on bicycle maintenance.

食物及物資援助項目

FOOD AND MATERIAL SUPPORT



2024年，由於疫情持續影響和經濟衰退，社會復甦緩慢，食物支援工作雖然面臨一些挑戰，但啓愛仍然堅持為基層家庭和長者提供食物及物資援助。

餐飲業和社會經濟狀況尚未完全復甦下，導致我們獲捐贈的剩食數量有所下降，仍未能回復至疫情前的水平。同時，企業和個人的食物及物資捐贈也有所減少。雖然面臨種種困難，但啓愛仍堅定維持每週二至週六的物資派發服務，向家庭和長者會員提供奶粉、零食、米、凍肉、罐頭食品、熱餐和日用品等必需品。致力將剩食和即將過期的物資去幫助有需要的家庭和長者，又可減輕環境負擔。儘管現有食物捐贈和回收量未能完全滿足會員需求，但我們仍由衷感謝食物銀行、企業及個人的支持。在過去一年裡，我們每月仍能為受惠家庭派發超過8880 kg的食品，讓他們每月可節省約港幣\$2,000。

我們相信，隨著社會和經濟的逐步復甦，食物回收量也會逐步恢復到疫情前的水準。啓愛會繼續努力，為深水埗的家庭提供各種支援，並積極拓展其他物資捐贈的渠道。我們誠邀各界朋友繼續支持我們的工作，共同幫助弱勢社群渡過難關。

The food rescue endeavors undertaken in the year 2024 faced certain challenges, yet Feeding the Needy has persevered in providing sustenance and material assistance to underprivileged families and the elderly. In the year 2024, although the food aid work confronted more obstacles, Feeding the Needy has steadfastly continued to offer support to families and senior citizens in need.

Owing to the persistent impact of the pandemic and economic recession, the social recovery has been gradual, introducing some difficulties to the food collection operations. The catering industry and the overall socioeconomic landscape have not fully rebounded, leading to a decrease in the volume of surplus food we can procure from these customary sources, failing to reach pre-pandemic levels. Concurrently, corporate and individual food and material donations have also declined.

Despite the various adversities, Feeding the Needy has resolutely maintained the food distribution service from Tuesday to Saturday, providing essential items such as milk powder, snacks, rice, frozen meat, canned food, hot meals, and daily necessities to member families and the elderly. We are dedicated to converting food waste and expiring products from nearby sources into valuable resources, which can assist the underprivileged groups in need and also mitigate the environmental burden.

Although the current food donations and recycling volumes cannot wholly meet the members' needs, we are sincerely grateful for the continuous support from the food bank, businesses, and individuals. Over the past year, we have been able to distribute over 8880kg of food to the beneficiary families every month, enabling them to save approximately HK\$2,000 per month.

We believe that as society and the economy gradually recover, the food recycling volume will also gradually return to the pre-pandemic level. Feeding the Needy will persist in striving to provide the necessary food assistance to the groups in need, and proactively expand other channels for material donations. We sincerely invite friends from all walks of life to continue supporting our work, and together help the underprivileged groups overcome the difficulties.

我們衷心感謝百老匯於疫情後的艱難時期，向深水埗的家庭慷慨捐贈電器。他們的貢獻提供了重要的資源，如微波蒸焗爐和空氣淨化器濾網，大大支持有需要的家庭，並有效提升他們的生活品質。

Broadway Lifestyle's Generous Support for Sham Shui Po Families

We sincerely thank Broadway Lifestyle for their generous donation of electronic appliances to families in Sham Shui Po during these challenging post-pandemic times. Their contributions have provided essential resources, such as microwave steam grill ovens and air purifier filter, significantly supporting families in need and improving their living quality.



經濟支援項目 FINANCIAL SUPPORT

撐住「里」－ 社區同行及支援計劃 (嘉道理慈善基金會)
Community Cash Voucher for Low-income Households in Sham Shui Po
(Kadoorie Charitable Foundation Services Limited)



嘉道理慈善基金會與啓愛於2024年在深水埗區啟動了一項全面的社區支援計劃，旨在改善低收入家庭的生活和商戶的的困難。我們深知疫情後許多家庭仍面臨經濟挑戰，因此設計了一個多層面的「社區餐飲卷計劃」以滿足他們的迫切需求。為實現自給自足及社區抗逆力，該計劃圍繞三大方面:醫療支援、食物保障和社區振興。由啓愛執行的該計劃,為符合條件的家庭提供各種類型的代金券,包括:

In 2024, Kadoorie Charitable Foundation and J Life Foundation launched a comprehensive community support initiative aimed at uplifting the lives of low-income households in the Sham Shui Po district. Recognizing the persisting economic challenges facing many families in the aftermath of the pandemic, the foundation designed a multifaceted “Community Cash Voucher Program” to address their pressing needs. To achieve self-sufficiency and community resilience, the program was structured around three key pillars: medical support, food security, and community revitalization. The program, implemented by the J Life Foundation, provided various vouchers to eligible households, including:

醫療券 Medical Vouchers	洗牙、配眼鏡、西醫門診及物理治療 Covering dental care, eye check-ups and glasses repair, general medical consultations, and physiotherapy.
餐飲券 Medical Vouchers	適用於深水埗社區的餐廳 Covering dental care, eye check-ups and glasses repair, general medical consultations, and physiotherapy.
購物券 Shopping Vouchers	可於藥房、生果店、肉店、雜貨店及其他商戶使用 Redeemable at pharmacies, fresh produce markets, grocery stores, and other essential retailers.



除了支援家庭外，通過參與並支持這些以社區為本的商戶，我們冀能為社區經濟注入新活力，嘉道理慈善基金會亦深知當地商戶在深水埗整體社區的重要性。

By engaging with and supporting these small, neighborhood–centric enterprises, the foundation sought to breathe new life into the local economy, creating a symbiotic relationship between businesses and the residents they serve. Beyond the direct support to households, the Kadoorie Charitable Foundation recognized the vital role of the local business community in the overall well–being of the Sham Shui Po district.

教育項目

EDUCATION PROGRAMS

小學生課後功課輔導班（個人捐贈者）

After-school Homework Tutoring for Primary Students (Individual Donor – Mike Lonergan)

直至2024年，功課輔導班已經來到第十三年。自開辦以來，這項計劃一直是基層家庭的重要支援。今年，我們更迎來了一個重要的里程碑，我們重新舉辦了因新冠疫情而停辦的功課輔導班開學及結業禮，為同學們迎來的新學年注入動力。

近年，我們面對了一個新挑戰：大部分參與的學生都有特殊學習需要（SEN），而我們意識到基層社區中SEN學生難以獲得適當學業支援，因此輔導班調整為小班教學模式，從而提供更個人的指導，更有效幫助克服他們不同的學習困難。



小班的教學模式不僅提升了學童的學術表現，還讓我們與他們及其家庭建立了更緊密的關係。透過更深入了解他們的困難，我們了解更多他們的需要，並計劃在未來推出更多針對SEN學生的支援服務。

In 2024, J Life Foundation's after-school homework tutorial classes have been held for 13 years, which have been a vital support system for in-need families. This year marked a significant milestone as we hosted our kick-off ceremony again after the challenges of the COVID-19 pandemic.

In 2024, we faced a new challenge: half of the enrolled students had special education needs (SEN). Recognizing the lack of accessible academic support for SEN students in grassroots communities, we adapted the program to operate in small group settings. This adjustment allowed us to provide individualized attention, helping SEN children overcome their unique learning challenges. These small group tutorials not only improved the academic performance of the children but also allowed us to build closer relationships with them and their families. By gaining a deeper understanding of their struggles, we are motivated to develop more targeted support for SEN students in the future.

2024–2025 創意藝術繪畫班 (鷹君集團)

2024–2025 Creative Arts Painting Class (Great Eagle Holdings Limited)



為了培養基層學童的創造力及表達能力，我們於2024–2025年度推出了創意藝術繪畫班。這個計劃讓學童透過動手繪畫去探索自己的藝術天賦，並提升自信心。此課程不僅鼓勵創意發展，還為學童提供了一個讓他們表達自己情緒、想法的空間。

To nurture creativity and self-expression among children, we launched the Creative Arts Painting Class in 2024–2025. This program provided an opportunity for children to explore their artistic talents and develop their confidence through hands-on painting activities. The class not only encouraged creativity but also served as a therapeutic outlet for students to express their emotions in a supportive and fun environment.

2024 音樂治療工作坊 (香港扶輪社)

2024 Music Therapy Workshop (Rotary Club of Hong Kong)

2024年，我們開辦了音樂治療工作坊，旨在提升基層學童（包括有特殊學習需要學童）對音樂的興趣和能力，包括節奏練習、樂器探索及小組演奏。藉此提升學童自我表達能力和專注力等。工作坊中結合了節奏與動作的練習，幫助學生發展協調力及空間感，而小組演奏鼓勵學生參與社交互動、團隊合作及溝通。

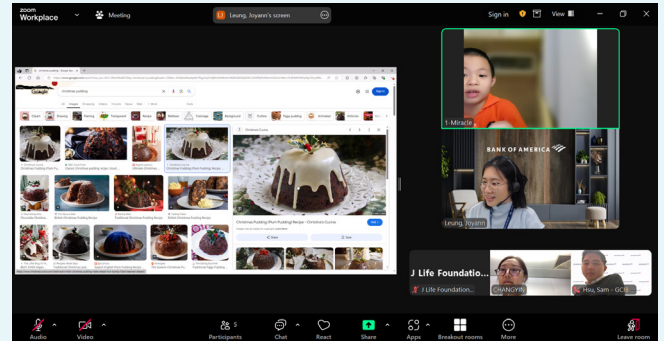
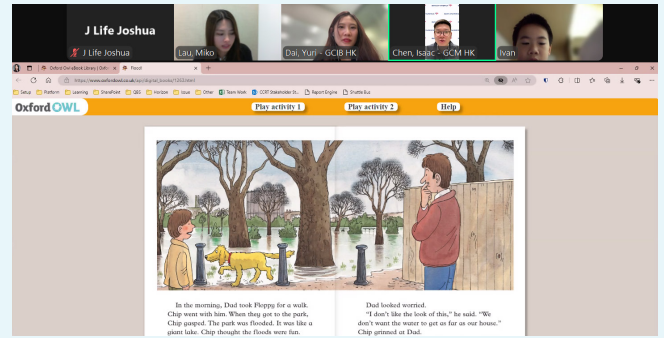
In 2024, we launched a music therapy workshop at Soundness Studio to foster interest and skills in music among underprivileged children, including those with special educational needs (SEN). The program included rhythm exercises, instrument exploration, and group performances to enhance self-expression and focus. By integrating rhythm and movement, the workshop supported students' coordination and spatial awareness, while group activities encouraged social interaction, teamwork, and communication, creating enriching experiences.



2024網上趣味英文班(第二期) (美國銀行) 2024 Online Fun English Class (Phase II) (Bank of America)

繼第一期的成功基礎下，我們在2024年推出了BofA網上趣味英文班（第二期），繼續為學童提供生動有趣的英文課程。此計劃以網上形式進行，通過遊戲、講故事及對話練習提升學生的英文水平。靈活的網上學習模式讓學生能夠在家中舒適地學習，同時培養對語言學習的興趣。

Building on the success of the first phase, the 2024 BofA Online Fun English Class (Phase II) continued to provide engaging and interactive English lessons for children. This program, conducted entirely online, focused on improving students' English proficiency through games, storytelling, and conversational practice. The flexible online format allowed students to learn comfortably from their homes while fostering a love for language learning.



2024-2025 啟愛躲避盤訓練班 (香港扶輪社) 2024-2025 J Life Frisbee Training Class (Rotary Club of Hong Kong)



運動在兒童成長中扮演著重要角色。於2024-2025年度，我們推出了啟愛躲避盤訓練班，向學童介紹這項結合了躲避球和飛盤元素的趣味運動。此計劃旨在提升學生的團隊合作、協調能力及體能，並鼓勵學童培養健康的生活方式。

Sport plays a vital role in children's development. In 2024-2025, we launched the J Life Frisbee Training Class, introducing children to the exciting sport of Frisbee, a fun and inclusive activity combining elements of dodgeball and frisbee. This program promoted teamwork, coordination, and physical fitness while encouraging students to develop a healthy and active lifestyle.

強化生命項目 EMPOWERMENT PROGRAM

J Life x BeCandle —— 香薰婦女就業計劃 Women Empowerment Candle Project



J Life與本地蠟燭品牌BeCandle攜手合作，推出了香薰婦女就業計劃，為基層婦女提供專業的香薰蠟燭工藝培訓。過去半年間，參與的婦女接受了完整的技術培訓，成功掌握了製作高品質旅行香薰蠟燭的技能，並達到BeCandle的生產標準。

她們的手工製作品現已於BeCandle西貢店及J Life Mart（位於深水埗的社企店舖）發售。這個項目不僅為婦女提供了可持續的就業機會，更幫助她們提升自信心，建立自我價值。

香薰婦女就業計劃體現了J Life推動基層社區長遠發展的承諾。參與的婦女來自不同背景，通過這個計劃獲得了支持家庭的能力，並為本地經濟作出貢獻。除了技術上的提升，她們亦收穫了自信、目標感及社區的支持，展現了連結與互助的重要性。

在2024年，J Life的婦女們也參與了BeCandle與多個知名品牌及機構的聯乘合作計劃，製作出高品質的旅行香薰蠟燭。2024年的重要合作包括：Careyou Beauty，香港藝術中心，C.P.U，The Good Grocer。當中與Careyou Beauty的三方合作以「母愛之光」為主題，推出了獨家香味「壽眉龍眼」，讓產品承載中國傳統文化，亦令婦女的心意和故事都能刻劃在每個蠟燭當中。

In collaboration with the local candle brand BeCandle, J Life launched the Women Empowerment Candle Project, a groundbreaking initiative aimed at equipping underprivileged women with professional craftsmanship skills. Over the past six months, this program has provided comprehensive training in candle-making, enabling participants to create high-quality travel tin candles under BeCandle's production standards.

Their handcrafted travel candle series is now available at BeCandle Sai Kung and J Life Mart, our social enterprise store in Sham Shui Po. This project not only fosters sustainable employment opportunities but also strengthens the confidence and self-worth of the women involved.

The Women Empowerment Candle Project exemplifies J Life's commitment to creating long-term, meaningful change for grassroots communities. The program has brought together women from diverse backgrounds, providing them with the tools to support their families and contribute to the local economy. Beyond technical skills, participants have gained self-assurance, a sense of purpose, and the support of their peers, reinforcing the importance of connection and community.

In 2024, J Life's women artisans further expanded their contributions by producing high-quality travel tin candles for BeCandle's collaborations with several renowned brands and institutions. Key collaborations in 2024 include: Careyou Beauty, Hong Kong Art Centre, C.P.U, The Good Grocer. The collaboration with Careyou Beauty features the theme "Light of Maternal Love" and introduces the exclusive fragrance "Shoumei Longan." This product embodies traditional Chinese culture and allows the sentiments and stories of women to be captured in each candle.



展望未來 Looking Ahead

香薰婦女就業計劃標誌著J Life推動基層社區改變的重要里程碑。展望未來，我們將努力擴大類似計劃的覆蓋面，幫助更多有需要的婦女，並通過工藝技能建立可持續的發展模式。在合作夥伴及社區的支持下，我們將繼續為基層婦女帶來光明的未來。

The Women Empowerment Candle Project represents a significant milestone in J Life's mission to transform lives in grassroots communities. Moving forward, we aim to expand similar initiatives to reach more women in need, fostering a sustainable model for empowerment through craftsmanship. Together, with the support of our partners and the community, we will continue to light the way for brighter futures.



今年是J Life婦女賦權計劃邁入第六年，我們一直珍惜每一個展示婦女手工藝作品及分享其動人故事的機會。今年夏天，我們很榮幸獲得香港麗晶酒店邀請，參與他們舉辦的意義非凡的慈善市集。這次活動為我們的婦女提供了一個平台，展示她們親手製作的DIY工藝品，這些作品充分展現了她們的努力、技能及創意。同時，也讓我們能向麗晶酒店的團隊及合作夥伴分享我們婦女賦權計劃的故事，傳遞支持基層婦女建立可持續生活的重要性。

As we celebrate the 6th year of our J Life Women Empowerment Program, we continue to cherish every opportunity to showcase the incredible work of our women and share their inspiring stories with the community. This summer, we were honored to be invited by Regent Hong Kong to participate in their meaningful Charity Market.

The event provided a platform for our women to display their handcrafted DIY creations, which reflect their dedication, skill, and creativity. It also allowed us to share the journey of our empowerment initiative with Regent Hong Kong's team and partners, emphasizing the importance of supporting grassroots women in building sustainable livelihoods.

社區發展項目 COMMUNITY PROGRAMS

穿梭石硤尾太子4km社區跑 Shei Kip Mei Prince Edward 4km Community Run



感謝膳動衡邀請啓愛成員參加社區跑，在認識深水埗社區的不同面貌時，同時感受運動的樂趣。

Thank you to FoodSport Foundation for inviting J Life members to participate in the community run, allowing us to explore different aspects of the Sham Shui Po community while enjoying the fun of exercise.

2024 夢想營& 2024 機械達人大挑戰及機器人挑戰營
D.R.E.A.M Camp & Robotics Challenge Camp (Rainbow Foundation Limited)



今年，在Rainbow Foundation的支持下，啓愛學童有幸參與了機械達人大挑戰及機器人挑戰營和夢想營。

夏令營透過STREAM（科學、科技、機械人、工程、藝術及數學）及英文戲劇活動，讓小朋友在暑假仍積極學習。這些豐富的經歷不僅拓寬了他們的視野，也為他們的暑假增添了難忘的回憶。

We are grateful to the Rainbow Foundation for their generous support, enabling J Life students to participate in the Robotics Challenge Camp, and D.R.E.A.M Camp in 2024. Through STREAM (Science, Technology, Robotics, Engineering, Arts, and Mathematics) and English drama activities, these summer camps fostered active learning, broadened the children's perspectives, and created cherished memories during their summer break.

溜冰體驗日 Ice Skating Day



感謝MegaBox贊助溜冰場的門票，讓一眾小朋友都有機會在一個專業的溜冰場上去體驗和感受溜冰的樂趣。

Thank you to MegaBox for sponsoring ice rink tickets, enabling children to experience the joy of ice skating at a professional rink.

義工服務及企業社會責任 VOLUNTEERING AND CORPORATE SOCIAL RESPONSIBILITY

個人義工 Individual Volunteers

今年,我們很高興有數位青少年義工積極參與啓愛的義工服務、幫助啓愛實施各活動及項目。當中他們為啓愛做了很多新嘗試,例如派發食物給長者及家庭、社交媒體營運、影片編輯和協助我們進行教育項目。這些經驗對他們以及我們而言都是獨特的,我們亦希望義工活動令他們有所得著。

This year, we are delighted to have several youth volunteers actively participating in our services at J Life. They have contributed significantly to the implementation of various activities and projects. Among their efforts, they have undertaken many new initiatives, such as distributing food to seniors and families, managing social media, editing videos, and assisting us with educational programs. These experiences have been unique for both them and us, and we hope that their involvement in volunteer activities has been rewarding.

長者迪士尼一日遊 (周大福贊助)

Elderly Disney One Day Trip (Sponsored by Chow Tai Fook)



感謝周大福贊助了本次活動的交通費用,並派了義工陪同長者過了一個愉悅又難忘的一天,讓長者也能夠體驗迪士尼樂園的奇妙處處。

Thank you to Chow Tai Fook for sponsoring the transportation costs of this event and for sending volunteers to accompany the elderly, ensuring a joyful and unforgettable day, allowing our seniors to experience the magic of Disneyland.

聖誕烘焙體驗日 (富國銀行贊助) Christmas Baking Day (Sponsored by Wells Fargo)



感謝Wells Fargo的贊助和義工的幫忙，讓小朋友可以在聖誕的前夕親手製作蛋糕，提早過一個溫暖的聖誕。

Thank you to Wells Fargo for their sponsorship and the help of volunteers, which enabled children to personally bake cakes on the eve of Christmas, celebrating a warm Christmas early.

即興藝術畫畫體驗日 (美國銀行贊助) Art Jamming Event (Sponsored by Bank of America)



感謝美國銀行的支持，讓啟愛的小朋友可以與義工合力創作一幅幅別具特色的畫作，並展現出小朋友在藝術方面的潛能。

Thank you to Bank of America for their support, which enabled J Life children to collaborate with volunteers in creating distinctive artworks, showcasing the children's potential in art.

籌款活動 FUNDRAISING ACTIVITIES

「無名英雄」人道獎 The One humanitarian awards



2024年，傅姑娘榮獲「無名英雄」人道獎，以表揚她卓越的社區貢獻。當中的獎金將會投放於啓愛的教育項目，繼續透過教育去改善基層家庭的生活。

In 2024, Miss. Elli Fu was honored with THE ONE Humanitarian Award, recognizing her outstanding community contributions. The prize money will be allocated to support J Life education programs, continuing to improve the lives of underprivileged families through education.

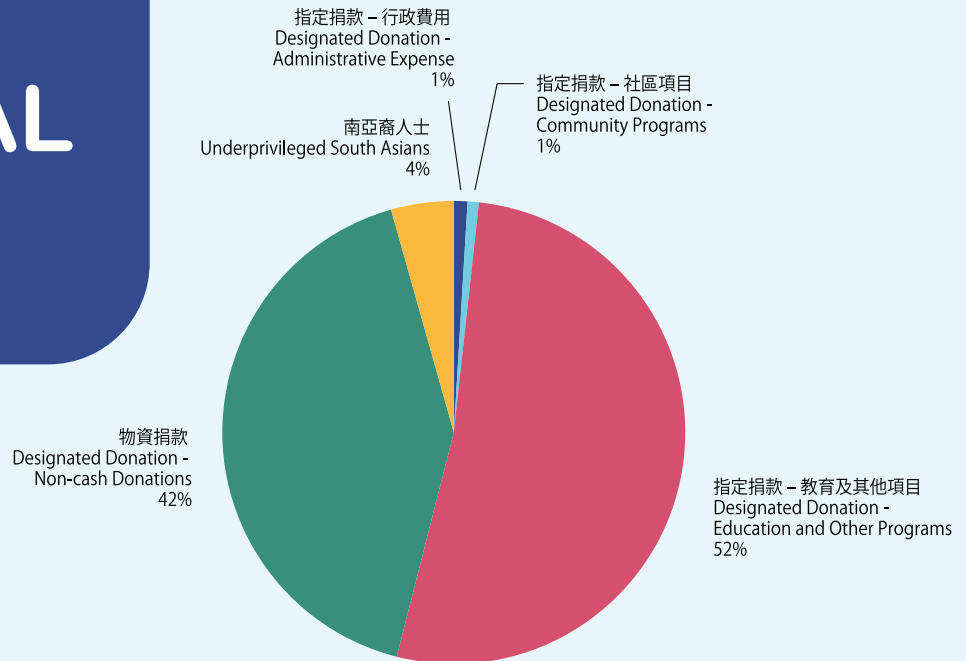
黃廷方慈善基金捐贈儀式 Ng Teng Fong Charitable Foundation Donation Ceremony

啓愛很榮幸可以成為黃廷方慈善基金支持的本地慈善機構，而獲贈的捐款會投放在啓愛的食物支援去持續地幫助基層家庭和長者。

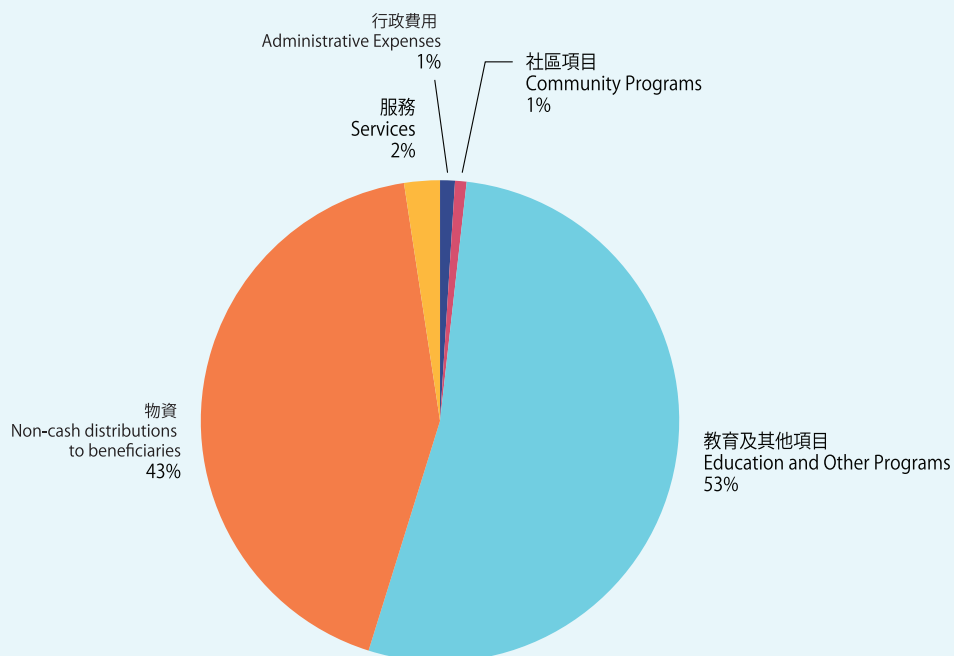
We are thrilled to be one of the NGO partners to receive donations from the Ng Teng Fong Charitable Foundation. With the donations, J Life would continue to support and provide food services for the families and elderlies in Shum Shui Po.



財務報告 FINANCIAL REPORT



指定捐款 – 行政費用 Designated Donation – Administrative Expense	HK\$150,554
指定捐款 – 社區項目 Designated Donation – Community Programs	HK\$124,080
指定捐款 – 教育及其他項目 Designated Donation – Education and Other Programs	HK\$8,261,362
物資捐款 Designated Donation – Non-cash Donations	HK\$6,588,531
其他捐款 Other Income	HK\$691,733
合共 Total:	HK\$15,816,260



行政費用 Administrative Expenses	HK\$154,299
社區項目 Community Programs	HK\$119,940
教育及其他項目 Education and Other Programs	HK\$8,174,306
物資 Non-cash distributions to beneficiaries	HK\$6,588,531
服務 Services	HK\$371,628
合共 Total:	HK\$15,408,704

活動概覽 EVENTS SUMMARY

日期 Date	贊助/合作機構 Sponsor	活動 Event
27/1/2024	民政事務總署 Home Affairs Department	香港故宮文化博物館 Hong Kong Palace Museum
27/1/2024	Rainbow Foundation Limited	挪亞方舟之親子定向大挑戰 Noah Ark's Day Tour
3/2/2024	AIA集團	友邦嘉年華X世界雜技團 AIA Carnival X Circus Show
12/4/2024	個人捐贈者 Individual Donors	詹瑞文《即興之王》舞台劇
12/4/2024	個人捐贈者 Individual Donors	炎明熹《Gi-FORCE》演唱會 Gigi Yim 《Gi-FORCE》 Concert
17/4/2024	MegaBox	溜冰體驗日 Ice Skating Day
21/4/2024	香港迪士尼樂園 Hong Kong Disneyland	迪士尼童夢一日游 Disneyland One Day Trip
10/5/2024	美國銀行 Bank of America	即興藝術畫畫體驗日 Art Jamming Event
21/6/2024	富國銀行 Wells Fargo	即興藝術畫畫體驗日 Art Jamming Event
29/6/2024	膳動衡 Foodsport Foundation	穿梭石硤尾太子4km社區跑 Shei Kip Mei Prince Edward 4km Community Run
14/7/2024	MegaBox	Ice Skating
18/7/2024 – 20/7/2024	Rainbow Foundation Limited	機械達人大挑戰 Robotics Challenge Camp
22/7/2024	個人捐贈者 Individual Donors	Movie Day電影觀賞【壞蛋獎門人4】
4/8/2024	香港扶輪社 Rotary Club of Hong Kong	Movie Day電影觀賞【玩轉腦朋友2】
14/8/2024	Rainbow Foundation Limited	夢想營 D.R.E.A.M Camp
15/8/2024 – 17/8/2024	Rainbow Foundation Limited	夢想營 D.R.E.A.M Camp
23/8/2024	美國銀行 Bank of America	Movie Day電影觀賞【多啦A夢:大雄之地球交響樂】
24/8/2024	Rainbow Foundation Limited	挪亞方舟親子活動 Noah Ark's Day Tour
25/8/2024	香港迪士尼樂園 Hong Kong Disneyland	夏日暑假迪士尼之旅 Disneyland One Day Trip
29/8/2024	個人捐贈者 Individual Donors	功課輔導班開幕禮 After-school Tutoring Class Opening Ceremony
1/9/2024	香港迪士尼樂園 Hong Kong Disneyland	迪士尼之旅 Disneyland One Day Trip
15/9/2024	香港迪士尼樂園 Hong Kong Disneyland	迪士尼之旅 Disneyland One Day Trip
23/9/2024	周大福珠寶集團有限公司 Chow Tai Fook Jewellery Group	迪士尼之旅 Elderly Disneyland One Day Trip
13/10/2024	新鴻基地產 Sun Hung Kai Properties	香港單車節 Hong Kong Cyclothon
25/10/2024		譚嘉儀Kayee《Be with You》演唱會
3/11/2024	香港迪士尼樂園 Hong Kong Disneyland	Marvel超級英雄10公里跑 Marvel Super Heros 10K
13/12/2024	富國銀行 Wells Fargo	烘培日 Baking Day
14/12/2024	Rainbow Foundation	挪亞方舟親子活動 Noah Ark's Day Tour
20/12/2024	香港麗晶酒店 Regent Hotel	聖誕聯歡會 Christmas Party

同行的夥伴

DONORS AND PARTNERS

Donors 贊助商

7-11便利店 7-Eleven	陳張敏總夫人慈善基金
荷蘭銀行 ABN AMRO Bank N.V.	Chan Cheung Mun Chung Charitable Foundation
艾奕康 AECOM	信越控股有限公司 G & M Holdings Limited
美亞保險 AIG Insurance Hong Kong Limited	真毅環境科技有限公司 Green Breeze Limited
香港美國俱樂部基金會 American Club Foundation(ACF)	香港青年獎勵計劃 HKAYP
美國國際集團 American International Group, AIG	霍金路偉律師行 Hogan Lovells
艾橋生物科技集團有限公司 AQ BIO TECHNOLOGY GROUP LIMITED	香港 01 Hong Kong 01
高富金融集團 Athena Best Financial Group	香港港安醫院 Hong Kong Adventist Hospital
愛培自閉症基金 Autism Partnership Foundation	香港業餘冰球會 Hong Kong Amateur Hockey Club Limited
美國銀行 Bank of America	香港會基金 Hong Kong Club Foundation Limited
中國銀行 (香港)有限公司 Bank of China (Hong Kong) Limited	香港社區基金 Hong Kong Community Foundation
法國巴黎銀行 BNP Paribas	香港迪士尼樂園 Hong Kong Disneyland
中銀人壽 BOC Life	香港養和醫院 Hong Kong Sanatorium & Hospital
陶哲甫及陶潘麗瑤基金有限公司 C.F. & Nancy Tao Foundation Limited	益力多乳品有限公司 Hong Kong Yakult Company Limited
陳瑞球家族福利及慈善基金有限公司 Chan Sui Kau Family Benefits and Charitable Foundation Limited	中國工商銀行 (亞洲) ICBC
卜蜂國際 Charoen Pokphand Foods Public Company Limited(CPF)	IG 集團 IG Group
周凱旋基金會 Chau Hoi Shuen Foundation Limited	海景嘉福洲際酒店 InterContinental Grand Stanford Hong Kong, an IHG Hotel
周大福慈善基金有限公司 Chow Tai Fook Charity Foundation Limited	摩根大通 J.P. MORGAN
合保實業有限公司 Consonant Industrial Limited	鎔信有限公司 John Lam & Associates Limited
康和電機有限公司 Cornwall Contracting Company Limited	香港置地集團公司 Hong Kong Land Limited
康和電器工程有限公司 Cornwall Electrical Engineering Limited	香港交易所慈善基金 HKEX Foundation
愜意咖啡會有限公司 Cozy Coffee Club Limited	孫志新慈善基金 Suen Chi Sun Charitable Foundation Limited
永義慈善基金會有限公司 Easyknit Charitable Foundation Limited	應力工程有限公司 KPA Engineering Limited
EMCO Novus International Limited	蘭桂坊酒店 Lan Kwai Fong Hotel
Exmount Enterprises Limited	瑞生國際律師事務所 Latham & Watkins LLP
國浩 (香港) 事務所 Grandall Zimmern Law Firm (F. R. ZIMMERN LIMITED)	利希慎基金有限公司 Lee Hysan Foundation
	香港深水埗獅子會有限公司 Lions Club Of Sham Shui Po Hong Kong Limited
	Little Fitting Room
	小木屋工作室有限公司 Little Wood Studio Limited
	建岐實業投資 Janchor Partners
	麥格理資產管理 Macquarie Asset Management Limited

美心集團 Maxim's Caterers Limited
 迪臣國際醫學儀器有限公司
 Medical Technologies Limited
 奧恩國際幼稚園
 Mighty Oaks International Nursery and Kindergarten
 Mission Possible Foundation Limited
 黃廷方慈善基金有限公司
 Ng Teng Fong Charitable Foundation Limited
 新創建集團有限公司 NWS Holdings Limited
 愛心聖誕大行動 Operation Santa Claus
 中庸資本 Optimas Capital Limited
 太盟投資集團 PAG Consulting Limited
 電訊盈科 PCCW
 半島商品有限公司 Peninsula Merchandising Limited
 Peter Bennett 基金會 Peter Bennett Foundation
 一樓畫室有限公司 PopaArt Limited
 Ralph Lauren Asia Pacific Limited
 讓社會服務基金有限公司
 RANG SS Foundation Limited
 香港扶輪社 Rotary Club of Hong Kong
 聖安娜餅屋 Saint Honore Cake Shop Limited
 正愛慈善基金會有限公司
 Seal of Love Charitable Foundation Limited
 老友記慈善農莊有限公司
 Senior Buddy Charity Farm Limited
 港協暨奧委會奧夢成真有限公司
 SF&OC Sports Legacy Company Limited
 信和集團 Sino Group
 一起微笑有限公司 Smile with us HK Limited
 Sophos Hong Kong Company Limited
 南華早報 South China Morning Post
 寶光實業國際有限公司
 Stelux Holdings International Limited

新鴻基地產有限公司
 Sun Hung Kai Properties Limited
 太古地產有限公司 Swire Properties Limited
 電視廣播有限公司
 Television Broadcasts Limited (TVB)
 香港美國會 The American Club Hong Kong
 鷹君集團有限公司 The Great Eagle Holdings Limited
 香港會基金 The Hong Kong Club
 香港社會服務聯會
 The Hong Kong Council of Social Service
 香港帝苑酒店 The Royal Garden Hong Kong
 The Wee Bean
 君峰國際有限公司 Timberport International Limited
 娛藝院線有限公司 UA Cinema Circuit Limited
 U 周刊 U Magazine
 Unir 酒店有限公司 Unir Hotels Pty Ltd
 震宇迪生（香港）有限公司
 Universal Dpl (HK.) Co., Ltd.
 香港百宜有限公司 Universal Robina Corporation
 HK
 USANA True Health (Hong Kong) Foundation
 Limited
 慧妍雅集 Wai Yin Association
 領盛國際有限公司 Well Synergy International
 Limited
 富國銀行集團 Fargo & Company
 榮華慈善基金 Wing Wah Charity Foundation
 穎語有限公司 Wing's Share Company Limited
 瑞銀慈善基金會 UBS Optimus Foundation
 智和有限公司 Wise Peace Limited

夥伴 Partners

東海堂 Arome Bakery
 基督教巴拿巴愛心服務團有限公司
 Barnabas Charitable Service Association
 Limited
 希望之盒 Box of Hope
 建·祝義工隊 Build & Wish Voluntary Team
 Burt's Bees HK
 大家樂 Café de Coral
 CATCH Pamper & Playdate
 國泰航空有限公司
 Cathay Pacific Airways Limited
 祥騰 Cheong Tang Fashion Wholesale
 中聖書院 China Holiness College

基督教關懷無家者協會
 Christian Concern For The Homeless Association
 荃新天地 City Walk
 拔萃男書院 Diocesan Boy's School
 English for Asia Limited
 尚品 365 有限公司 Enjoy 365 Limited
 環境及自然保育基金
 Environment and Conservation Fund
 樂餉社有限公司 Feeding Hong Kong Limited
 惜食堂 Food Angel
 膳心連基金有限公司
 Foodlink Foundation Limited
 膳動衡 FOODSPORT

夥伴 Partners

香港國際全備福音商人團契 Full Gospel Business Men's Fellowship International (Hong Kong)	祝福大行動 Peace of Box
康恩有限公司 Grace Cup Company Limited	彩虹基金有限公司 Rainbow Foundation Limited
哈羅香港國際學校 Harrow International School Hong Kong	勁億發展有限公司
Health Hong Kong Chinese Medicine Centre	Razor Glory Building Maintenance Limited
香港業餘冰球會 HKAHC Channel (Hong Kong Amateur Hockey Club)	義騎 Righteous Rider
民政事務總署 Home Affairs Department	樂雅兒玩具(香港)有限公司
匡智會 Hong Chi Association	Royal Toys (HK) CO., Limited
香港寬頻有限公司 Hong Kong Broadband Network	聖公會聖基道兒童院
香港足球會 Hong Kong Football Club	S.K.H. St. Christopher's Home Limited
香港美心西餅 Hong Kong Maxim's Cake	星巴克 Starbucks Coffee Company
香港榮華餅家 Hong Kong Wing Wah Cake Shop	超藝企業(亞洲)有限公司
香港山崎麵包有限公司 Hong Kong Yamazaki Co.Limited	Sup-Prem (Asia) Ltd.
城市的盼望基金有限公司 Hope of The City Foundation Limited	耀陽行動 Sunshine Action
Island Evangelical Community Church (Island ECC)	善幫愛聯盟有限公司
香港樂心會 Life Commitment Charity Club	Symbol Of Alliance Limited
奇華餅家有限公司 Kee Wah Bakery	香港基督少年軍臻訓中心 The Anchor House
建懋建築工程有限公司 Kingswell Construction & Engineering Co., Ltd	神舟關顧行動 The Ark Mission
萬寧 Mannings	基督教敬拜會 The Praise Assembly
馬莎百貨 Marks and Spencer	華特迪士尼(香港)有限公司
現代教育 Modern Education	The Walt Disney Company (Hong Kong) Limited
森川弁當 Morikawa Bento	湯美仕(亞太)有限公司
音樂兒童基金會 Music Children Foundation Limited	Toms Asia Pacific Limited
幫寶適 Pampers	大華銀行 United Overseas Bank
	頂好海鮮酒家 Very Good Restaurant
	穩勝物流有限公司 Vins Logistics Limited
	惠僑英文中學 Wai Kiu College
	WeWah音樂家
	WeWah Music Company Limited
	一田 YATA
	香港中華基督教青年會 YMCA
	中華基督教英華堂 Ying Wa Church
	英皇教育 King's Glory Education
	英皇佐治五世學校 King George V School



啓愛共融社區中心
J Life Family Service Centre

九龍深水埗大南街380號地下
G/F, 380 Tai Nan Street, Sham Shui Po



啓愛青年中心
J Cafe Youth Centre

九龍深水埗南昌街203-211號昌華新樓一樓G室
Room G, 1/F, Cheong Wah Building, 203-211 Nam Cheong Street, Sham Shui Po



啓愛點社會企業
J Life Mart

九龍深水埗大南街343號地下
G/F, 343 Tai Nan Street, Sham Shui Po



社會房屋營運中心
Social Housing

九龍長沙灣青山道249A 1F
1/F, 249A Castle Peak Road, Sham Shui Po



www.jlifefoundation.org



[jlifefoundation & fb.com/jlifemart](https://www.facebook.com/jlifefoundation)



[jlifefoundation & jlifemart](https://www.instagram.com/jlifefoundation)